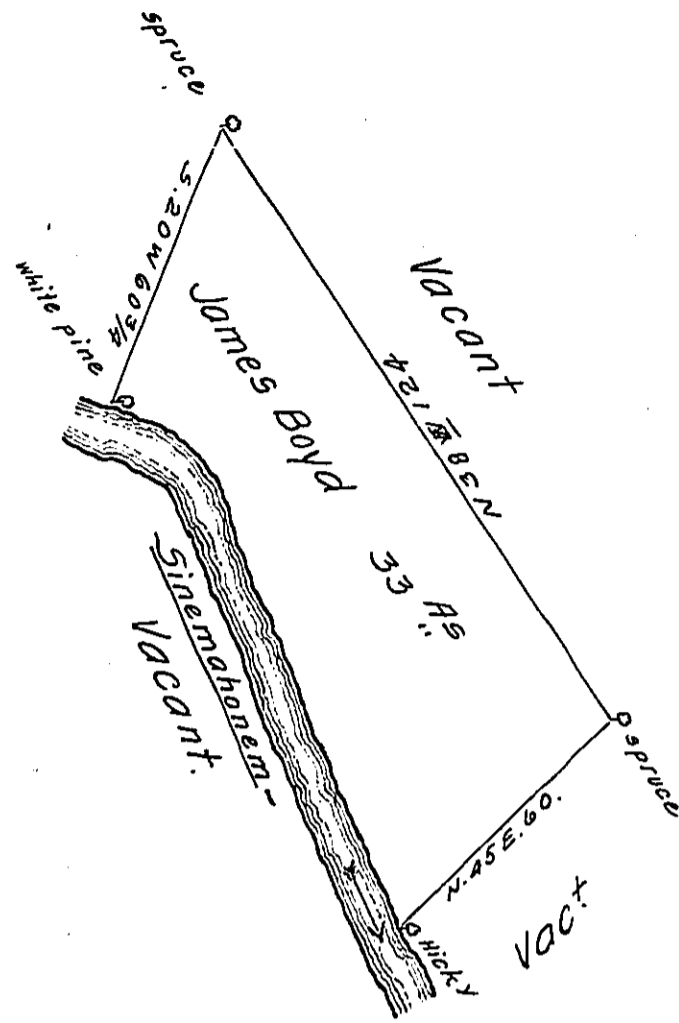


Courses & Distces  
down the Creek  
S 78 E 14.  
S 27 E 90.



A Draught of a tract of land situate on Sinemahonem - in District No 11 in the last purchase in Northumberland County containing thirty three Acres & the usual allowance of six per Cent. for roads &c<sup>a</sup>. Surveyed for James Boyd April 23<sup>d</sup> 1787 in pursuance of a Warrant No 800 Dated March 2<sup>d</sup> 1787.

J<sup>r</sup> Jas Harris D.S.

John Lukens Esq<sup>r</sup> }  
Surv<sup>r</sup> Gen<sup>l</sup> }

IN TESTIMONY that the above is a copy of the original remaining on file in the Department of Internal Affairs of Pennsylvania, made conformably to an Act of Assembly approved the 16th day of February, 1833, I have hereunto set my Hand and caused the Seal of said Department to be affixed at Harrisburg, this seventh day of December 1910.

*Henry Horch*  
Secretary of Internal Affairs.